



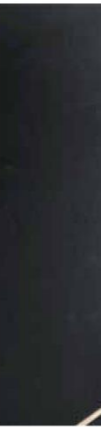
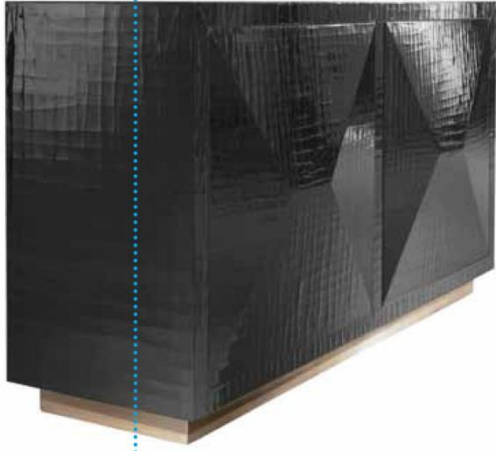
Bronze

青铜



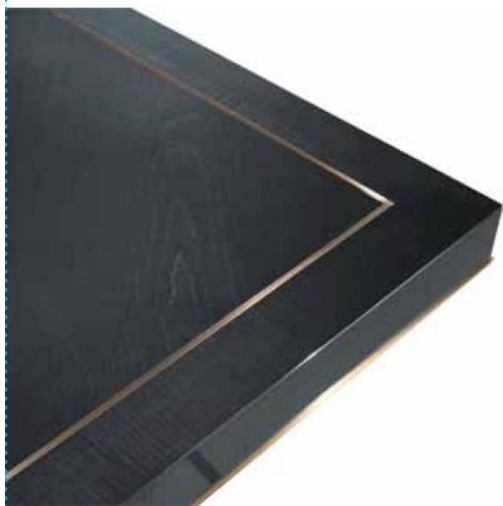
文：广宇 图片：APR

室内设计师 Kamini Ezralow 最近推出了和意大利家具公司 Orsi 合作开发的第一个家具设计系列——青铜。这个名字源自于细节中所使用的青铜材料的家具系列从优雅的装饰艺术中获得灵感，融合了古典青铜器的优点并与灰白梧桐和羊皮纸、镜子、漆器、开司米羊绒以及丝绸等元素相结合。清晰的纹路，优质的材质以及奢华的表面处理都赋予了青铜永恒的品质，为那些纯粹家居环境增添了一抹纯净的和谐感，同时在其功能和舒适度上也完全符合人体工程学的要求。





Leading interior designer, Kamini Ezralow, has launched her first collection of furniture, Bronze, a collaboration with Italian family firm, Orsi. Bronze takes its inspiration from the elegance of Art Deco, but brought right up to date through masterful combinations of antiqued bronze with grey-stained sycamore, grey-stained parchment, mirror, lacquer, cashmere and silk. Its clean lines, fine materials and luxurious finishes give it a timeless quality, which allow the pieces to work as harmoniously within a very purist interior as in a very grand one. It is also ergonomic, functional and comfortable.



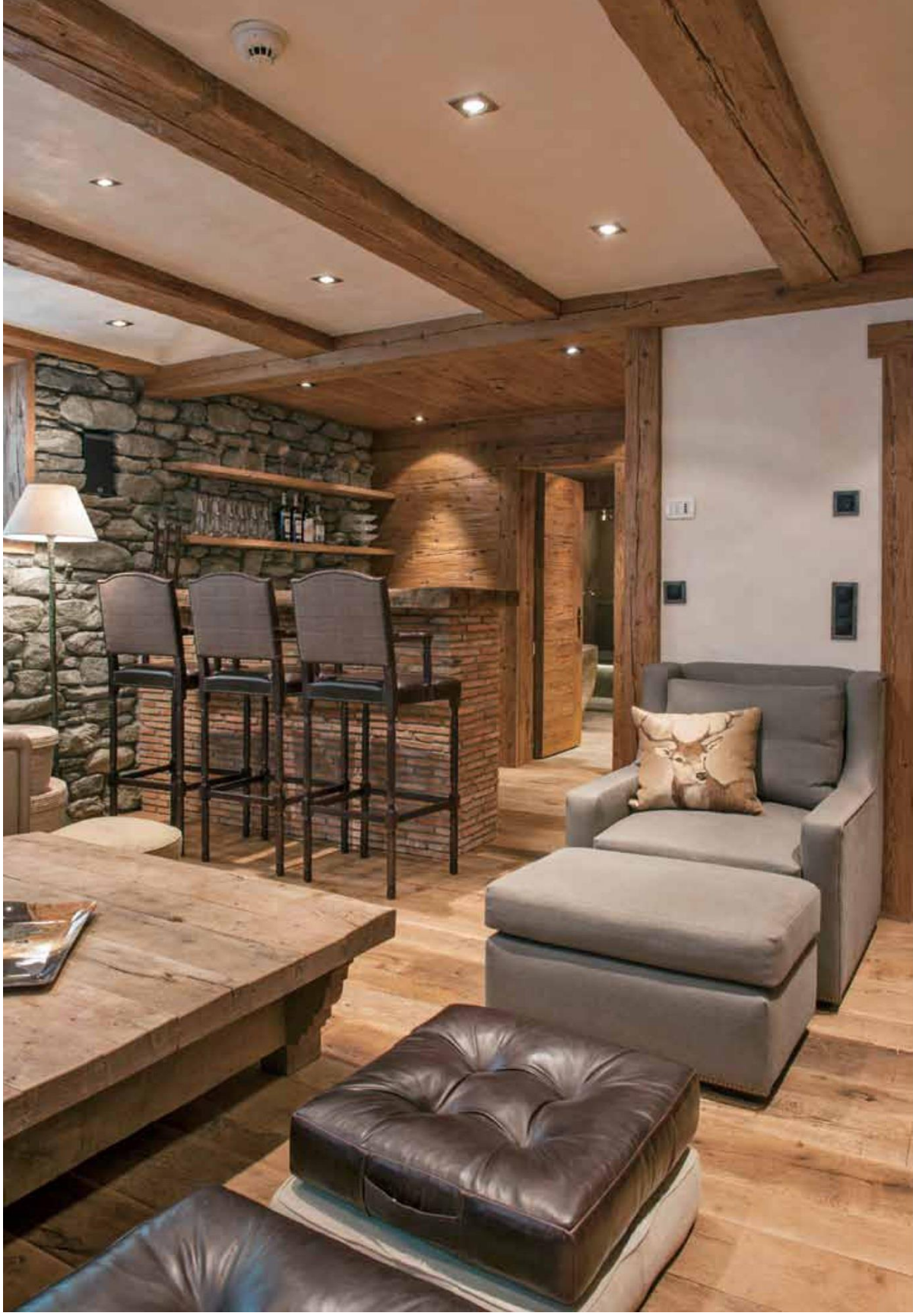


Designed by
Kamini Ezralow

Chalet Annelies

安内利斯木屋







文：牛茜 图片：APR

这所设计独特的瑞士木屋竣工于2012年的夏天，是一座完美的家庭营会地。雕刻手工艺的古木与自然岩石相结合，搭配露天浴室、炫丽的设施以及华美的家具，这样的内部装饰显得时尚而别致。

三层高的木屋共有四间卧室，可同时容纳十个人在此居住。木屋所处的位置距离 Savoleyres 缆车站或滑雪练习场非常的近。

车库，靴室和电影娱乐室位于木屋的底层，这里还配备了酒吧，带有岩浴、桑拿以及澡堂的水疗馆等休闲设施和一间洗衣房与一个客用洗手间。

拾阶而上是带有三间卧室的中层，每间客房外都有一个户外露台或阳台。这三间卧室分别是配有漂亮浴缸及淋浴室的主卧；放置了两张手工打造的双层床的儿童房，这里可以安置四个孩童，房间内也配有浴室和淋浴以及一个配有

浴室的雙人套间。

木屋的最顶层是开放式设计的起居室和用餐区域，房子的高度决定了这里是可以提供最好观景视角的地方，从房间内就可以眺望到周围山岭的美丽景色。温暖的壁炉旁是游乐一天后最好的休憩场所。从起居室走出去便是餐厅区域，设施先进的开放式厨房设在起居室的另一侧。第四间卧室位于该层的背面。

整间木屋无论是从浴室特制的下沉式石制浴缸，还是屋内所有的板制建材，甚至墙群以及浴盆都是由主人亲自从意大利精挑细选得来的。其中一间浴室的浴缸是从一个古老城堡中迁移出来的、拥有两百多年历史的古董浴缸，还有那伫立于地库门口的拱门也是一个有着很长历史的古物。地下酒窖的设计更是采用了古老的“Couer du Pigeon”的石板地面，而这种由古木和石板组成的地库却让整个木屋显得与众不同而又温馨无比。



An exceptional chalet, Annelies, completed in the summer of 2012 is the perfect family retreat. Hand crafted antique woods and natural stone have been matched with roll top baths, beautiful fixtures and sumptuous furnishings to create an incredibly chic interior.

Set out over 3 floors the chalet sleeps a total of 10 people in 4 bedrooms. The chalet is a short stroll from the Savoleyres lift station and the nursery slopes.

The bottom floor of the chalet houses the garage, boot room, and the entertainment area with cinema room, bar and spa with rock bath, sauna and hammam. A laundry room and guest toilet is also located on this floor.

Stairs lead to the middle floor containing 3 bedrooms all with access to the surrounding terraces or balconies. The master bedroom boasts a beautiful roll top bath and separate shower. The children's bunk room sleeps 4 in two sets of hand crafted bunk beds with en-suite bath and shower room. The third is a double bedroom with en-suite shower room. A guest toilet is also located on this floor.

The open plan living and dining area is located on the top floor, it's elevation affording panoramic views of the surrounding mountains. The large fire is perfect to relax in front of after a hard day on the slopes. The living area accesses the wrap around balconies with outside dining area. The well equipped

kitchen opens onto this area. A further double guest bedroom with en-suite shower room is located to the back of the property.

The bathrooms have custom made stone sinks – all the slabs used for these, as well as for the walls and tubs, were handpicked by the client in Italy. One bathroom has a 200 year old sink from an old castle, and an old stone archway was used for the entrance door from the garage. The wine cellar has the old style "Couer du Pigeon" stone floor. The garage was done in old wood, with stone floors, so that every inch of the Chalet is special and cozy!